

ACDEU



Priming Assisted Centrifugal Pump w/Autostart Model PA6D60-4045T Size 6" x 6"



Total Head		Capacity of Pump in U.S. Gallons per Minute (GPM) at Continuous Performance				
P.S.I.	Feet					
61.5	142	555	555	555	555	555
60.7	140	600	600	600	600	600
52.0	120	995	1230	1230	1230	1230
43.4	100	1015	1435	1720	1820	1820
34.7	80	1030	1440	1760	2030	2260
26.0	60	1045	1455	1770	2040	2285
17.4	40	1060	1460	1780	2050	2320
Suction Lift		25'	20'	15'	10'	5'

Photo Unavailable at Publishing

PUMP SPECIFICATIONS

Size: 6 x 6" (152 mm x 152 mm) Flanged.

Casing: Gray Iron 30.

Maximum Operating Pressure 103 psi (710 kPa).*

Semi-Open Type, Two Vane Impeller: Ductile Iron 65-45-12.

Handles 3" (76,2 mm) Diameter Spherical Solids.

Suction Spool: Gray Iron 30.

Impeller Shaft: Stainless Steel 17-4 PH.

Replaceable Wear Plate: Carbon Steel C1015.

Bearing Housing: Gray Iron 30.

Seal Plate: Gray Iron 30.

Seal: Mechanical, Oil-Lubricated. Silicon Carbide Rotating Face. Silicon Carbide Stationary Seat. Fluorocarbon Elastomers (DuPont Viton® or Equivalent). Stainless Steel 18-8 Cage and Spring. Maximum Temperature of Liquid Pumped, 160°F (71°C).*

Shaft Sleeve: Stainless Steel 17-4 PH.

Priming Chamber: Gray Iron 30 Housing w/Stainless Steel Float and Linkage.

Discharge Check Valve: Ductile Iron Housing w/Buna-N Flapper.

Radial/Thrust Bearings: Open Double Ball.

Bearing and Seal Cavity Lubrication: SAE 30 Non-Detergent Oil.

Gaskets: Resistant Synthetic Rubber, Cork, PTFE, Vegetable Fiber, and Compressed Synthetic Fibers.

O-Rings: Buna-N.

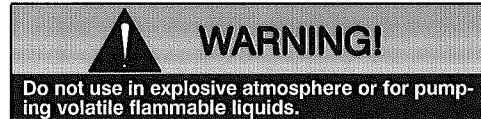
Hardware: Standard Plated Steel.

Bearing and Seal Cavity Oil Level Sight Gauges.

*Consult Factory for Applications Exceeding Maximum Pressure and/or Temperature Indicated.

Standard Equipment: Gear-Driven Air Compressor. Hoisting Bail. Strainer. Combination Skid Base w/Fuel Tank. Single Ball Type Float Switch.****Optional Equipment:** Battery. GR Hard Iron Impeller and Seal Plate. Heated Priming Chamber Kit. NPT Suction and Discharge Flange Kits. High Speed (55 MPH/89 KM/H) Single Axle Pneumatic-Tired Wheel Kit w/w/o DOT-Approved Lights and Electric Brakes. Tandem Axle Over-the-Road Trailer (Meets DOT Requirements) Available w/Either Electric or Hydraulic Surge Brakes, Running Lights, Jack Stands and Safety Cables/Chains. EPS w/Submersible Transducer Liquid Level Sensor (50 Ft. [15M] Cable Standard, Alternate Lengths Available).

**50 Ft. (15 m) Standard Length; Dual Switches and Alternate Cable Lengths Available From the Factory.

**ENGINE SPECIFICATIONS**

Model: John Deere 4045T.

Type: Four Cylinder, Four Cycle, Turbocharged, Liquid Cooled Diesel Engine.

Displacement: 275 Cu. In. (4,5 liters).

Governor: Electronic Isochronous.

Lubrication: Forced Circulation.

Air Cleaner: Dry Type.

Oil Reservoir: 17.5 U.S. Qts. (16,6 liters) Dry;

15.5 U.S. Qts. (14,7 liters) Refill.

Fuel Tank: 88 U.S. Gals. (330 liters).

Full Load Operating Time: 25.2 Hrs.

Starter: 12V Electric.

Standard Features: Low Oil Pressure and High Coolant Temperature Safety Shut Down Switches/Indicators. Autostart Instrument Panel Includes: Tachometer, Voltmeter, Hourmeter, Coolant Temperature Gauge, Oil Pressure Gauge, Manual/Stop/Auto Key Switch, 10 Amp Pushbutton Circuit Breaker, Audible Startup Warning Delay. Muffler w/Guard and Weather Cap. Throttle Control.**JOHN DEERE PUBLISHED PERFORMANCE:**Maximum Gross Continuous BHP
(Industrial Heavy Duty) 72 (54 kW) @ 2400 RPM

THE GORMAN-RUPP COMPANY • MANSFIELD, OHIO

GORMAN-RUPP OF CANADA LIMITED • ST. THOMAS, ONTARIO, CANADA

www.grpumps.com

Specifications Subject to Change Without Notice

Printed in U.S.A.

Specification Data

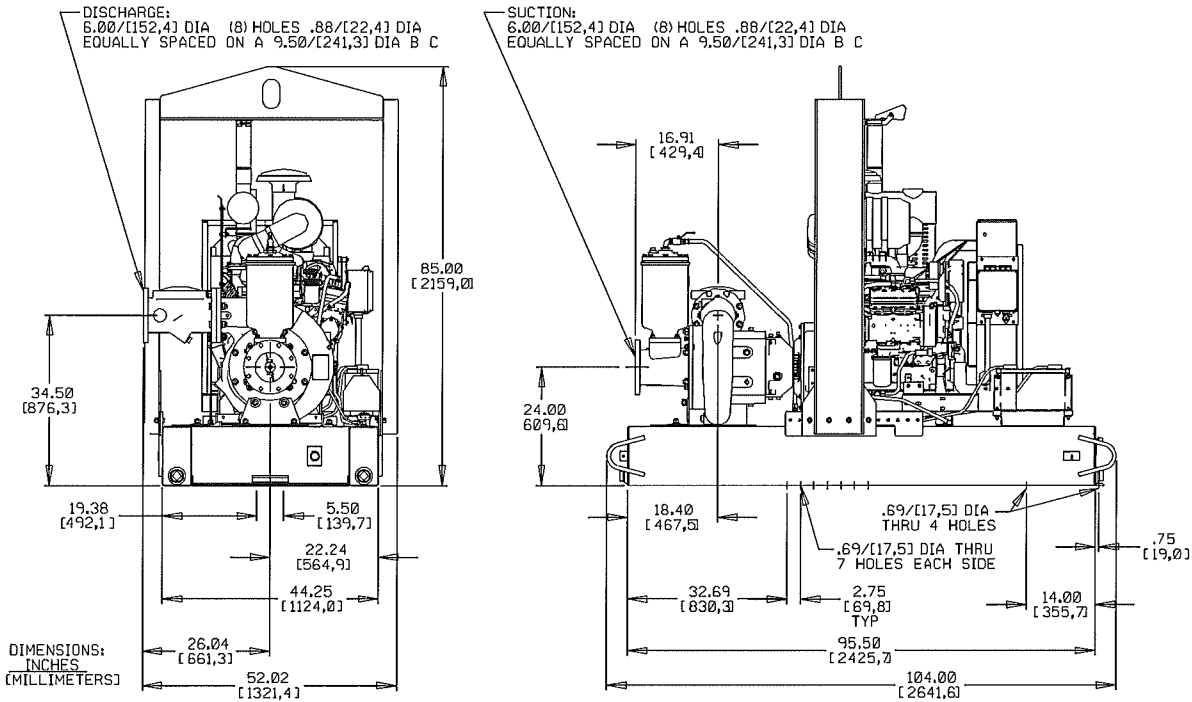
APPROXIMATE DIMENSIONS and WEIGHTS

SKID BASE

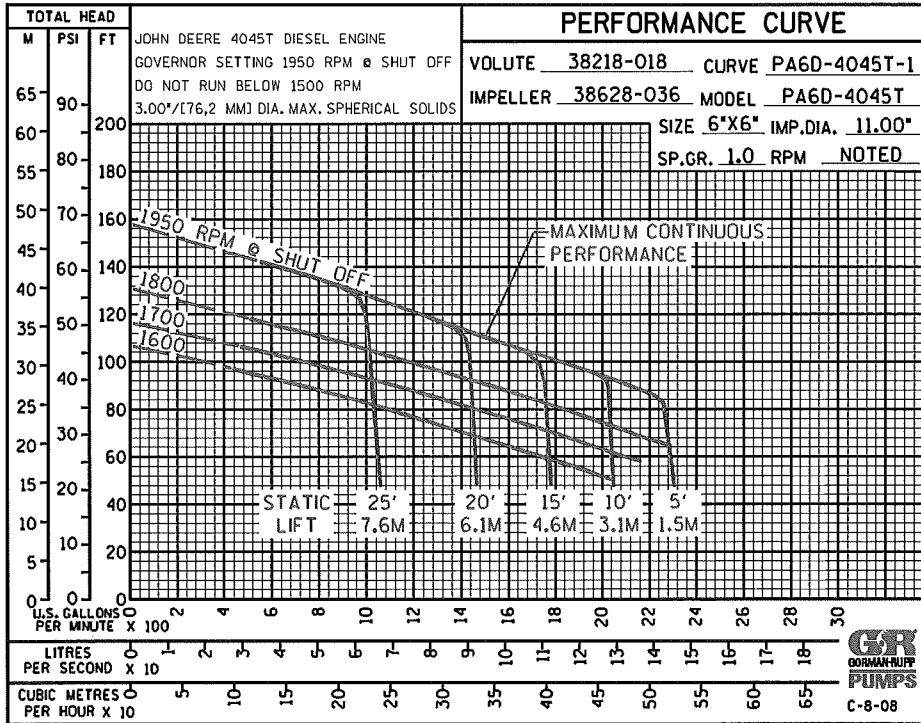
2-WHEEL

NET WEIGHT: 3655 LBS. (1658 KG.) 4150 LBS. (1882 KG.)
 SHIPPING WEIGHT: 3955 LBS. (1794 KG.) 4150 LBS. (1882 KG.)
 EXPORT CRATE SIZE: 336.1 CU. FT. (9.5 CU. M.)

SECTION 42, PAGE 1136



POWERED BY JOHN DEERE 4045T DIESEL ENGINE WITH AUXILIARY AIR COMPRESSOR



THE GORMAN-RUPP COMPANY • MANSFIELD, OHIO

GORMAN-RUPP OF CANADA LIMITED • ST. THOMAS, ONTARIO, CANADA

Specifications Subject to Change Without Notice

Printed in U.S.A.